



## MODEL 615F

High Speed Roll-Up Door

### ■ ENHANCED PRODUCTIVITY

With opening speeds up to 100" per second, the 615F fabric roll up door will provide increased material handling while minimizing air exchange and increasing energy efficiencies. Speed is fully adjustable and allows the user to tailor the door operation to exacting requirements.

### ■ ADVANCED TECHNOLOGIES

Reliable, low maintenance, high efficiency AC direct drive operator has no clutches or brakes to maintain or replace. Our standard frequency inverter, in conjunction with absolute encoder technology and digital controller, allows for smooth, quiet soft start/soft stop high speed door operation. With a gear driven push-pull technology the 615F curtain is always fully retained and sealed. Using flexible inverter technology, the user is allowed to choose from a variety of line side voltages.

### ■ INNOVATIVE DESIGN

Simple by design, the 615F incorporates an automatic curtain reset feature that requires no special tools or downtime. If the curtain becomes displaced from its track in either direction, it will automatically reset on the next upward cycle.

### ■ THERMAL DESIGN

With an insulated curtain and side guides with built in thermal breaks, the 615F door provides a superior level of conduction prevention.

### ■ TIGHTEST SEAL

Utilizing a "soft seal" (no bottom bar) bottom edge, the curtain molds to your floor's contours. This combined with its unique low profile track that continuously retains the curtain, the 615F stops air infiltration from the ground up. Integrated track seals do not touch fabric curtain during door operation providing a virtually maintenance free design.

### ■ LOW PROFILE

The 615F fabric roll up door requires only 5-1/2" of side room clearance and only 22" of standard head clearance making it one of the lowest profile doors in the industry.

### ■ SUPERIOR PERFORMANCE

As safe as it is reliable, the 615F fabric door has a soft bottom edge with no maintenance requiring reversing edges, batteries or extruded profiles. The 615F model uses an advanced sensing system to reverse door travel should the bottom curtain come in contact with any object. This simple, clean, maintenance free construction is complimented by a standard send and receive photo-eye and a manual override for opening without power.

### ■ UNMATCHED QUALIFICATIONS

With over 50 years of combined experience, our professional sales consulting team will ensure your mission-critical requirements, while maintaining our uncompromising dedication to quality and value added service.



Shown with Optional Insulated Curtain.

Innovative Design. Superior Quality. Exceptional Value.

## THE INDUSTRY'S UNPARALLELED DOOR SYSTEM OF CHOICE

Enviro's insulated fabric roll-up door is designed, engineered and precision manufactured with over 40 years of experience partnering with today's leading cold storage companies across the country. The 615F insulated fabric roll-up door combines a clean, attractive finish, while maintaining one of the smallest footprint in the industry. With a heavy-duty insulated fabric curtain, high speed, soft bottom edge technology and a simple breakaway system with automatic reset, this door sets the standard for controlled environments.

Using cutting-edge technology and exacting criteria for quality, these doors have surpassed market demands. Our quest for uncompromising quality, and our steadfast commitment to meet our customer's ever-changing expectations, is evident in one of the most durable, personnel friendly, maintenance free roll-up door systems available in today's highly controlled environment marketplace.

### THE LEADER IN COLD STORAGE DOOR INNOVATION

Enviro | ASI Doors, Inc.  
5848 North 95th Court | Milwaukee, WI 53225  
PHONE: 414.464.6200 | FAX: 414.464.9863 | TOLL-FREE: 800.558.7068  
[www.envirodoors.com](http://www.envirodoors.com)



**enviro**<sup>®</sup>  
Cold Storage Doors

# MODEL 615F

High-Speed Fabric Roll-Up Door System

## DESIGN AND CONSTRUCTION

### DOOR SIZES

- Up to 15' 0" wide x 15' 0" high.  
(Other sizes available - consult factory.)

### PANEL CONSTRUCTION

- Multi-filament insulated PVC coated curtain.
- Blue or orange color curtain standard.  
(Other colors available upon request.)
- No windknobs, windbars or tabs required.
- Soft bottom edge - no bottom bar or rigid profiles required.

### FRAME AND SHROUD CONSTRUCTION

- Side guides constructed with structural channels in galvanized steel.
- Side frames designed for maximum durability and utilize a polyethylene guide.
- Fully retained curtain along complete vertical edges.

### OPERATOR FEATURES

- Adjustable open speeds up to 100"/sec.
- High performance, high efficiency, soft start / soft stop, washdown rated 1 or 2 hp AC electric motor.
- Available in 208/230v single phase, or 208/230/460v three phase power.
- Absolute encoder controlled - washdown rated.
- NEMA 4 rated enclosure with clear view vision.

### PERFORMANCE FEATURES

- Breakaway curtain with automatic reset from either direction.
- Send and receive reversing photo-eye.
- Soft bottom curtain reversing without the use of electronic edges or batteries.
- Standard pushbutton to open and time delay to close.
- Manual motor override for opening without power.

### THERMAL PROTECTION

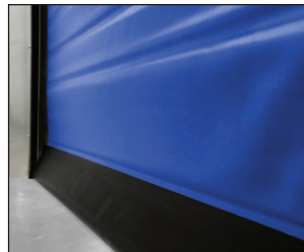
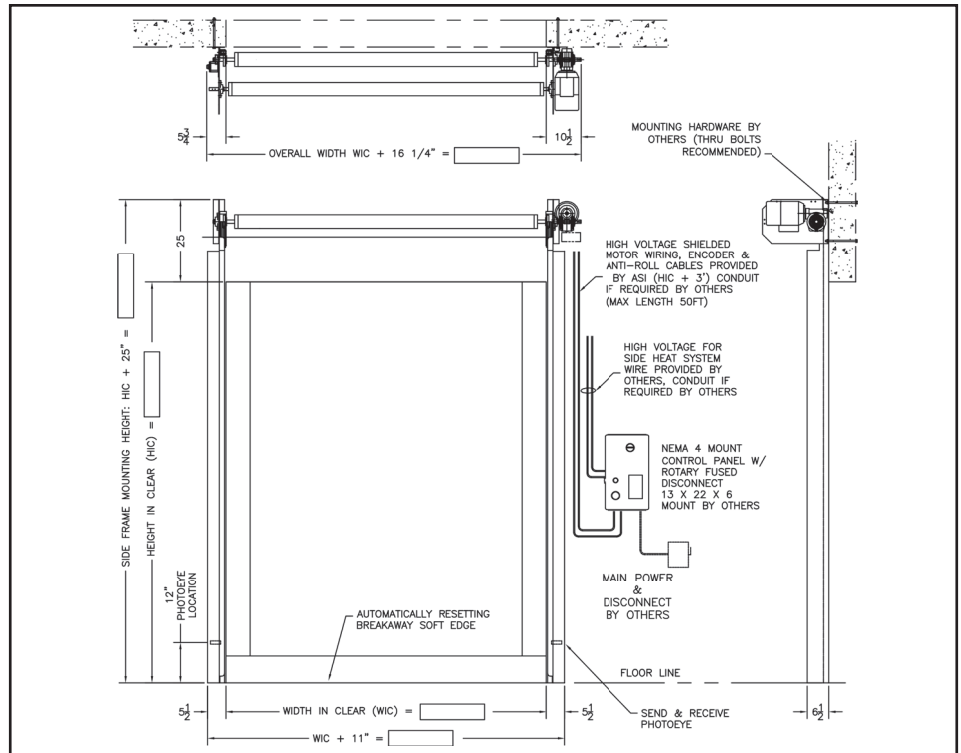
- Optional fully insulated PVC coated curtain.
- Polyethylene thermal breaks incorporated into side tracks.
- Standard side frame seals do not touch curtain during operation.
- Integrated heated side guides.
- Standard full horizontal heated lintel seal.
- Optional non-heated and heated air circulation systems.

### WARRANTY

- One year limited warranty on all components.
- ASI reserves the right to modify specifications without notice.

### OPTIONS

- Pull cords.
- Remote push buttons.
- Photo-eyes - actuator or reversing.
- Radio control - single or multi-channel receiver.
- Loop detector.
- Motion detector.
- Custom designed interlocking system.
- Pre-announce to close kit (light/alarm/ or combo).
- Stainless steel construction.
- Non-heated and heated air circulation systems.
- Operator shroud.
- Barrel fascia.



**Soft Bottom Edge**

- The ultimate safety for personnel.
- Provides for optimal sealing.



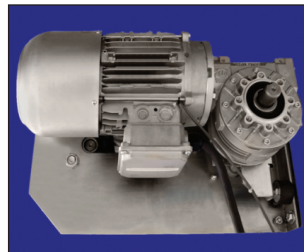
**Photo-Eye**

- Upon photo-eye interruption, door will return to full open position.



**Insulated Curtain**

- Insulated PVC coated curtain for thermal protection.



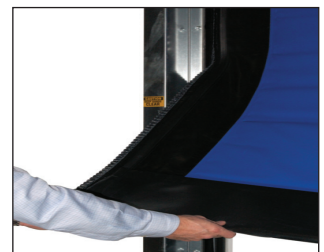
**Direct Shaft Drive**

- High speed opening.
- High performance AC drive.
- Absolute encoder controlled.



**Low Profile Track**

- Door requires only 5-1/2" of side clearance.



**Breakaway with Auto Reset**

- Impactable in either direction.
- Curtain will automatically reset on next upward cycle.

## THE LEADER IN COLD STORAGE DOOR INNOVATION

Enviro | ASI Doors, Inc.

5848 North 95th Court | Milwaukee, WI 53225

PHONE: 414.464.6200 | FAX: 414.464.9863 | TOLL-FREE: 800.558.7068

[www.envirodoors.com](http://www.envirodoors.com)

615F 7/7/14